

KSC-WA80/WA100

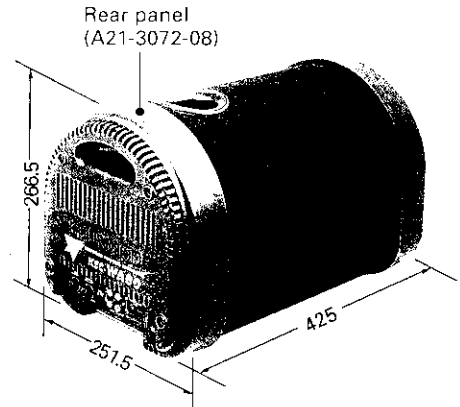
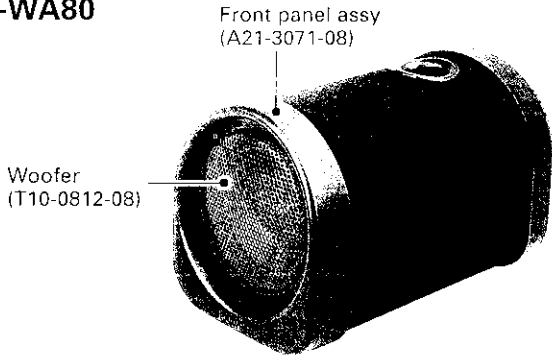
KENWOOD

SERVICE MANUAL

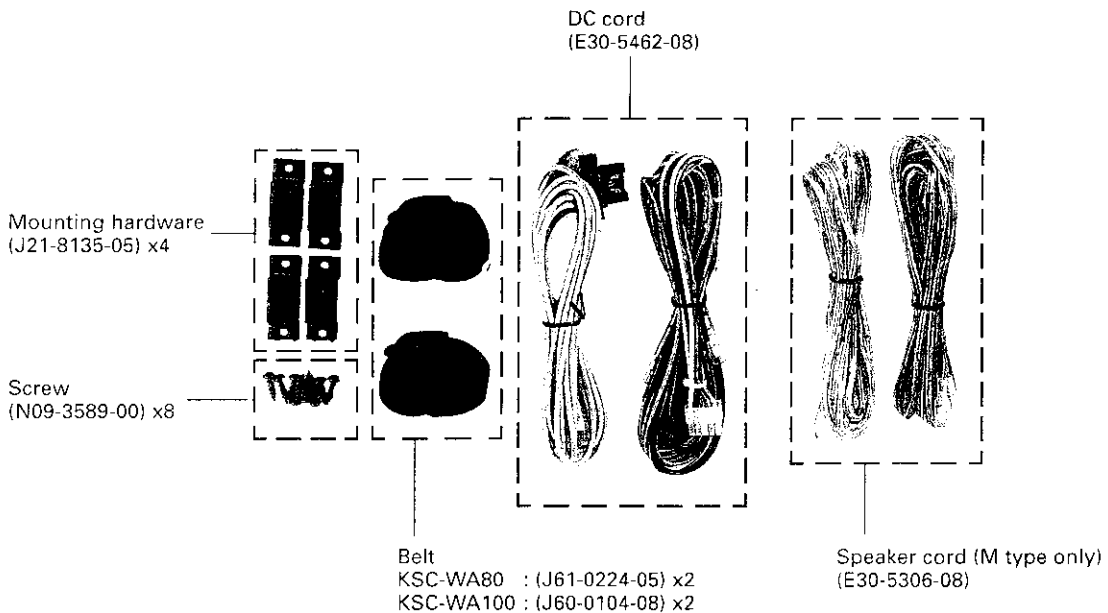
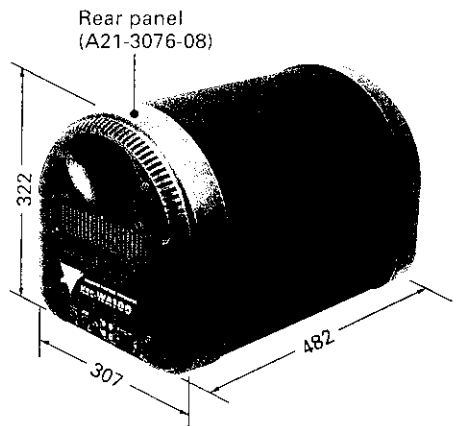
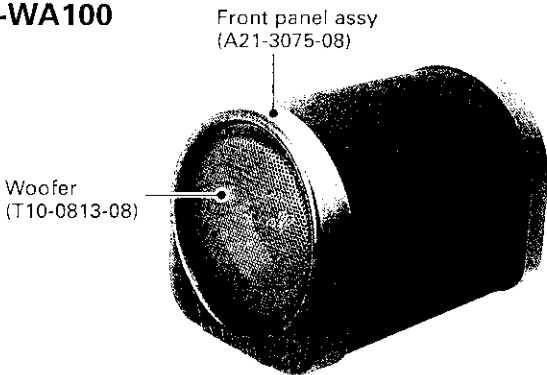
PARTS COPY

© 1998-1 PRINTED IN JAPAN
B51-7282-00 (N) 588

KSC-WA80

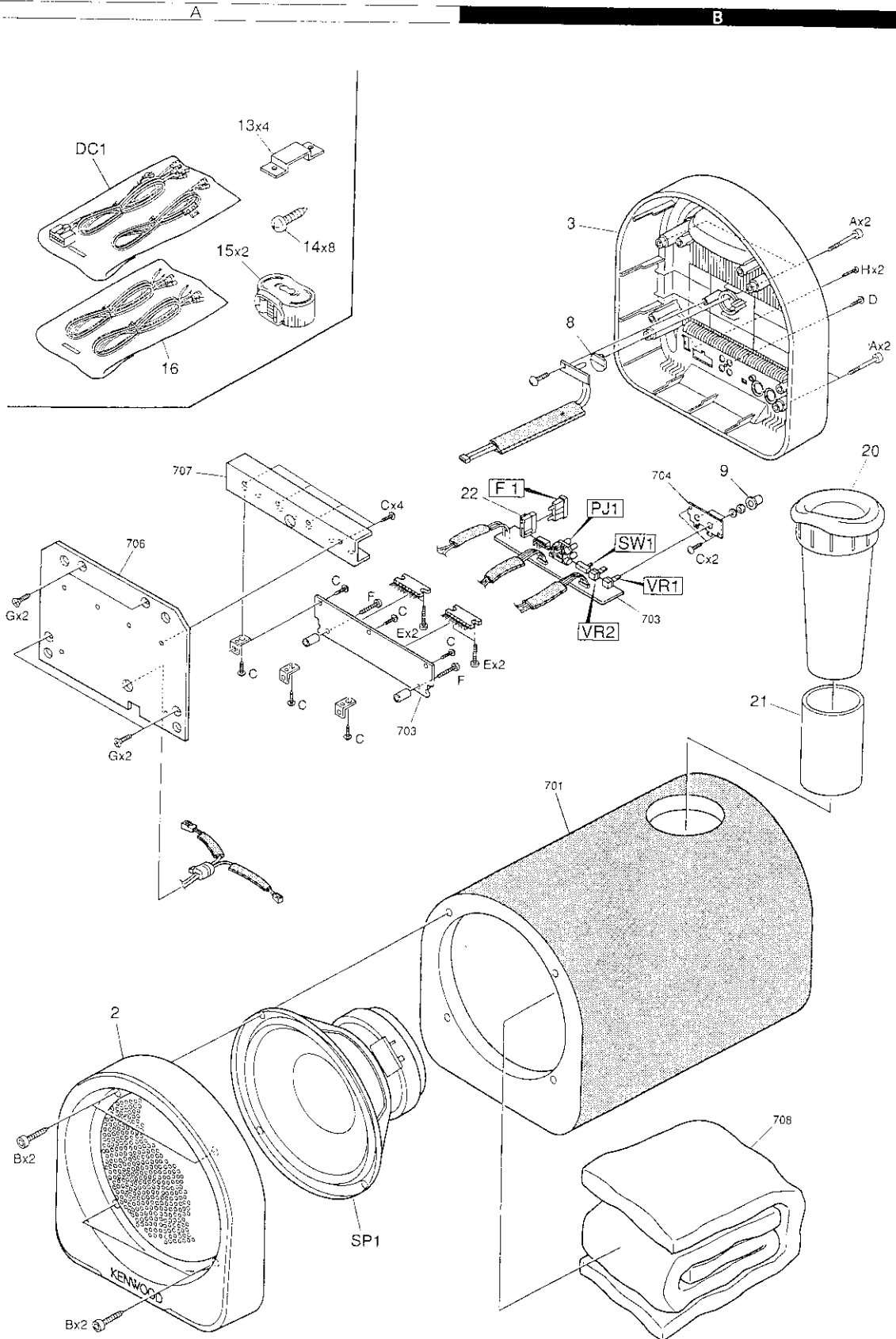


KSC-WA100



KSC-WA80/WA100

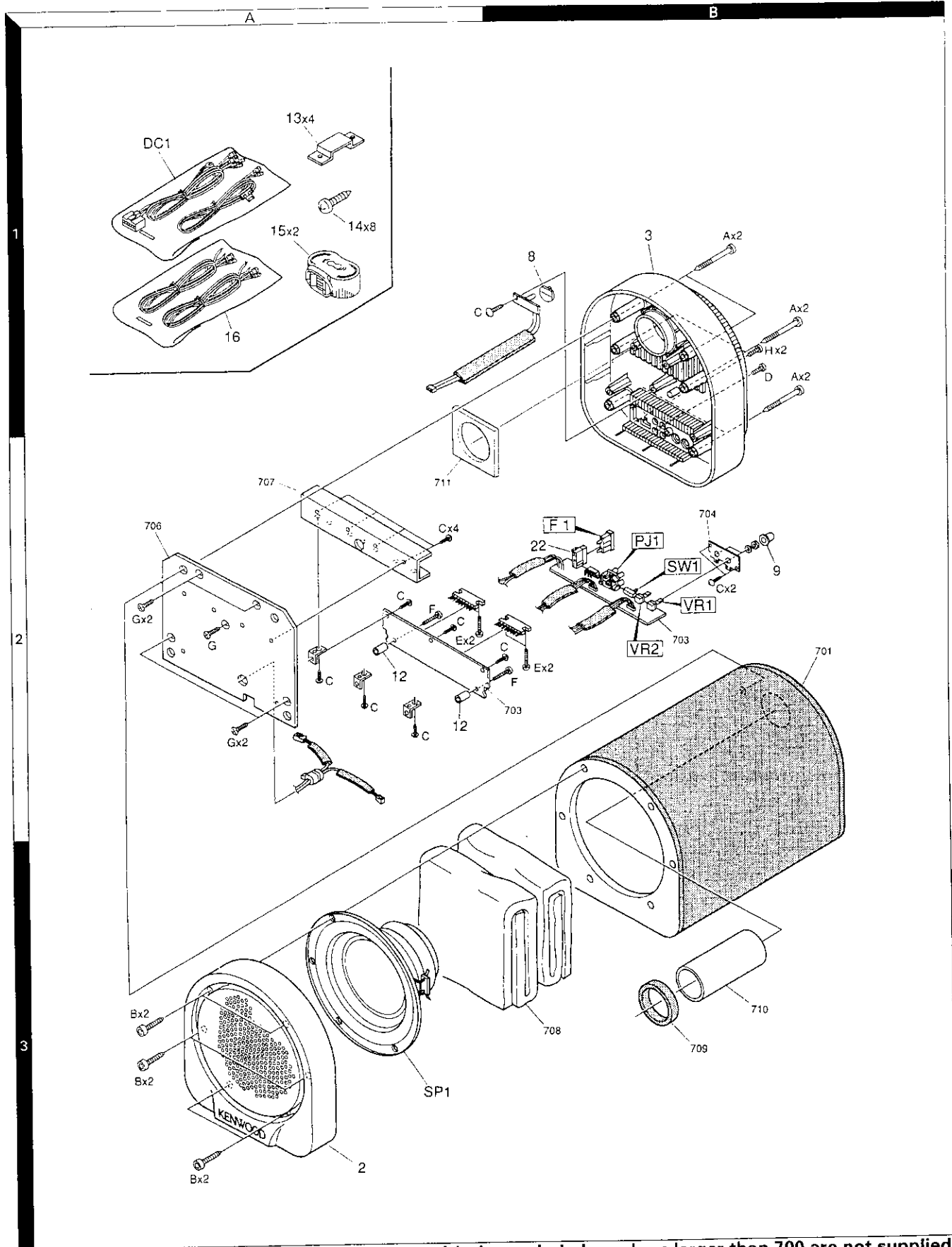
EXPLODED VIEW (KSC-WA80)



Parts with the exploded numbers larger than 700 are not supplied.

KSC-WA80/WA100

EXPLODED VIEW (KSC-WA100)



Parts with the exploded numbers larger than 700 are not supplied.

KSC-WA80/WA100

PARTS LIST

***New Parts**

Parts without Parts No. are not supplied.

Les articles non mentionnes dans le Parts No. ne sont pas fournis.

Teile ohne Parts No. werden nicht geliefert.

Ref.No.	A d e d w	Parts No.	Description	Mo- del
KSC-WA80				
2	3A	A21-3071-08	FRONT PANEL ASSY	80
3	1B	* A21-3072-08	REAR PANEL	80
8	1B	* B19-0886-14	LIGHTING BOARD	80
-		* B46-0629-00	WARRANTY CARD	
-		* B61-0929-00	INSTRUCTION MANUAL	
16	1A	E30-5306-08	SPEAKER CORD (M type only)	
DC1	1A	E30-5462-08	DC CORD	
-		H10-6055-05	POLYSTYRENE FOAMED FIXTURE	
-		H13-0751-08	PROTECTION BOARD	80
-		H21-1208-08	PROTECTION SHEET	80
-		H25-1068-08	PROTECTION BAG	80
-		* H51-1062-08	ITEM CARTON CASE	80
13	1A	J21-8135-05	MOUNTING HARDWARE	
15	1A	J61-0224-05	BELT	80
9	1B	* K29-0575-08	KNOB	
14	1A	N09-3589-00	SCREW	
A	1B	N09-3637-08	SCREW	
B	3A	N09-3586-00	SCREW (4X32)	
D	1B	N89-3010-45	SCREW (3X10)	
H	1B	N89-2008-45	SCREW (2X8)	
20	1B	T99-0380-05	PIPE DUCT	80
21	2B	T99-0385-05	PIPE DUCT	80
SP1	3A	T10-0812-08	WOOFER	80
KSC-WA100				
2	3A	A21-3075-08	FRONT PANEL ASSY	100
3	1B	A21-3076-08	REAR PANEL	100
8	1B	B19-1261-08	LIGHTING BOARD	100
-		* B46-0629-00	WARRANTY CARD	
-		* B61-0929-00	INSTRUCTION MANUAL	
16	1A	E30-5306-08	SPEAKER CORD (M type only)	
DC1	1A	E30-5462-08	DC CORD	
12	2A	G11-0299-08	CUSHION	100
-		H10-6055-05	POLYSTYRENE FOAMED FIXTURE	
-		H13-0773-08	PROTECTION BOARD	100
-		H21-1215-08	PROTECTION SHEET	100
-		H25-1082-08	PROTECTION BAG	100
-		* H51-1065-08	ITEM CARTON CASE	100
13	1A	J21-8135-05	MOUNTING HARDWARE	
15	1A	J60-0104-08	BELT	100
9	2B	* K29-0575-08	KNOB	
14	1A	N09-3589-00	SCREW (4X75)	
A	1B	N09-3637-08	SCREW	
B	3A	N09-3586-00	SCREW (4X32)	
D	1B	N89-3010-45	SCREW (3X10)	
H	1B	N89-2008-45	SCREW (2X8)	
SP1	3A	T10-0813-08	WOOFER	100

Ref.No.	A d e d w	Parts No.	Description	Mo- del
AMPLIFIER UNIT				
D4		B30-1806-08	LED	
C1	-6	CE04DW1H4R7M	ELECTRO 4.7UF 50WV	100
C1	-6	CE04DW1V100M	ELECTRO 10UF 35WV	80
C7	-10	CK45FB1H221K	CERAMIC 220PF K	
C11	-14	CK45FB1H101K	CERAMIC 100PF K	
C15	,16	CE04DW1H4R7M	ELECTRO 4.7UF 50WV	100
C15	,16	CE04DW1V100M	ELECTRO 10UF 35WV	80
C17		CE04DW1E220M	ELECTRO 220UF 25WV	
C18		CK45FF1H103Z	CERAMIC 0.010UF Z	
C19		CE04DW1HR47M	ELECTRO 0.47UF 50WV	
C20		CF92V1H223J	MF-C 0.022UF J	
C21		CF92V1H103J	MF-C 0.010UF J	
C22		CK45FB1H101K	CERAMIC 100PF K	
C23		CK45FF1H103Z	CERAMIC 0.010UF Z	
C24	,25	CE04DW1C330M	ELECTRO 33UF 16WV	
C26		CK45FB1H101K	CERAMIC 100PF K	
C27	,28	CE04DW1V100M	ELECTRO 10UF 35WV	100
C28		CE04DW1V100M	ELECTRO 10UF 35WV	80
C29		CF92V1H104J	MF-C 0.10UF J	100
C29		CF92V1H473J	MF-C 0.047UF J	80
C30		CF92V1H123J	MF-C 0.012UF J	80
C30		CF92V1H822J	MF-C 8200PF J	100
C31		CK45FB1H101K	CERAMIC 100PF K	
C32		CK45FF1E104Z	CERAMIC 0.10UF Z	
C34		CE04DW1HR47M	ELECTRO 0.47UF 50WV	100
C34		CK45FB1H101K	CERAMIC 100PF K	80
C35	,36	CE04DW1V100M	ELECTRO 10UF 35WV	
C37	,38	CK45FB1H471K	CERAMIC 470PF K	
C39	,40	CE04DW1C470M	ELECTRO 47UF 16WV	
C41	,42	CK45FF1H103Z	CERAMIC 0.010UF Z	
C43	-46	CE04DW1C101M	ELECTRO 100UF 16WV	
C47	-50	CE04DW1A221M	ELECTRO 220UF 10WV	
C51	,52	CF92V1H104J	MF-C 0.10UF J	
C53	,54	CE04DW1C222M	ELECTRO 2200UF 16WV	
C55	-58	CF92V1H104J	MF-C 0.10UF J	
C59	,60	CK45FB1H102K	CERAMIC 1000PF K	
C62	-64	CK45FF1H103Z	CERAMIC 0.010UF Z	
C65		CK45FB1H102K	CERAMIC 1000PF K	
C66		CE04DW1C101M	ELECTRO 100UF 16WV	
C67		CE04DW1C470M	ELECTRO 47UF 16WV	
C68		CE04DW1C221M	ELECTRO 220UF 16WV	
C73		CE04DW1V100M	ELECTRO 10UF 35WV	
C74	,75	CK45FB1H221K	CERAMIC 220PF K	
C76		CC45FSL1H560J	CERAMIC 56PF J	
C77		CK45FF1E104Z	CERAMIC 0.10UF Z	
C78		CC45FSL1H560J	CERAMIC 56PF J	
CN7		E08-1005-05	RECTANGULAR RECEPTACLE	
PJ1		E63-0206-08	PHONO JACK	
F1		F05-537-05	FUSE (15A)	
22	2B	J13-0208-08	FUSE HOLDER	
CH1		L33-C401-C8	CHOKE COIL	

80 : KSC-WA80

100 : KSC-WA100

† indicates safety critical components.